



Natural Resources Conservation Service

St. Joseph County Soil and
Water Conservation District



*St. Joseph County
Soil and Water
Conservation Partnership*



2007 Annual Report

Indiana State Department of Agriculture
Division of Soil Conservation





*2007 St. Joseph County SWCD Leaders
Supervisor's, Associate Supervisor's
& Honorary Members*

Supervisor's

John Dooms, Chairman
Paul Williams III,
Vice-Chairman
Jan Ivkovich
Carole Riewe
Dave Craft

Associate

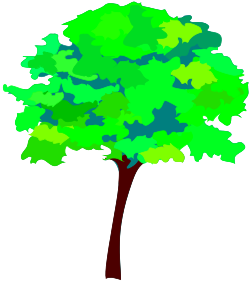
Supervisor's

Melvin Kulwicki
John Kulwicki
Randy Matthys
Jim LaFree
Chuck Lehman
Joe Long
Gene Myers
Richard Schmidt
Dale Stoner

Honorary Members

Bernie Byrd
Al Gostola
Jerry Knepp
Keith Lineback
William Millar

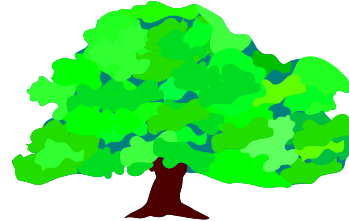
Partnership Staff...NRCS & SWCD



Debbie K nepp, District Conservationist, (NRCS)
Rick Glassman, Environmental Educator, (SWCD)
Troy Manges, County Conservationist, (SWCD)
Jenny Davis, MS4 Conservationist, (SWCD)
Billie Jo Moak, Administrative Assistant (SWCD)
Rafael Vega, Soil Conservationist, (NRCS)

Purdue Cooperative Extension Service

Eileen Connolly
Maryanne Denisi
Diana Mendelsohn-Snyder
Maria McComish
Rick Podell
Sylvia Schoen
Edie Sutton
Phil Sutton
Susan Weller
Libby Wikotich



Farm Service Agency

Mike Hoskins, CED
Helene Cannoot
Dee Fox
Cindy Philhower
Denise Trimboli

*48th Annual Meeting
February 22, 2008 @ 6:30 p.m.
St. Adalbert's Hall— Polish Style
Dinner*



Ron Hanson,
Keynote Speaker

Neal E. Harlan Professor of Agribusiness



*Wildlife Habitat Award
Richard Tomaszewski*



*Farmer of the Year
Doug Millar*

CONGRATUALTIONS

TO OUR 2007

CONSERVATION

AWARD WINNERS!



*John Dooms
25 Years of Service*



*Joe Long
20 Years of Service*

ADULT EDUCATION PROGRAMS

Programs	# Attended
2 Tree seminars	27
3 Composting Seminars	200
Hoosier River Watch training	7
<i>Contractor's workshop</i>	77
MS4 Workshop Audubon Society Bat program	45

Community Outreach
<i>St. Patrick's Park - Outdoor expo</i>
St. Joseph County 4_H Fair
Science Alive
E-Coli testing
Izaak Walton League
Quail Unlimited
<i>South Bend Farmer's Market</i>
Summer Intern Program
Potato Creek Festival





THE ST. JOSEPH COUNTY SWCD NEEDS YOU!

What is the SWCD?

We are a grass roots conservation partnership, working together with other government agencies to help landowners protect our country's resources.

The SWCD is involved in Farm Bill implementation, urban erosion control, education for both youths and adults and we work with our legislators for better conservation programs. We also have a conservation tree sales program.

Recruitment Meeting

March 17, 2008

6:00 PM

Farm Bureau Meeting Room

5605 U.S. 31 South

South Bend, IN 46614

Refreshments will be served.

Who is invited?

Anyone who is interested in working to better the conservation environment in our county.



Tree Sales Program

*Final Numbers for the 2006-2007
Tree Sales Program*



<i>Evergreen Trees Sold</i>	<i>15,500</i>
<i>Deciduous Trees Sold</i>	<i>5,375</i>
<i>Flowering Trees Sold</i>	<i><u>3,050</u></i>
<i>Total Trees Sold</i>	<i>23,925</i>
<i>Total Groundcover (Plants)</i>	<i>3,200</i>
<i>Total Wildflower Seed Packets</i>	<i>178</i>



2007 Conservation Planning Accomplishments

2,094	Acres of conservation plans on cropland
3,615	Acres of conservation plans applied on cropland
77	Acres of conservation plans on grazing land
100	Acres of conservation plans applied on grazing land
The following conservation practices were completed in St. Joseph County	
3100 ft	Fence
32	Acres of Filter Strip
300	Acres of Fire breaks
744	Acres of Nutrient Management
58	Acres of Pasture and Hay Planting
753	Acres of Pest Management
2,339 ft	Pipeline (Waterline)
1,316	Acres of Mulch Till/ No Till
35	Acres of Restoration on declining habitat
124	Acres of tree planting
2,233	Acres of Upland Wildlife Habitat Management
135	Acres of Waste Utilization
3	Watering Facilities
111	Acres of Wetland Restoration
488	Acres of Wetland Habitat Management



Filter Strips



Conservation Tillage



Tree Planting



Irrigation Efficiency



Thank You To The Following Agencies For Their Continued Cooperation & Support

Army Corps of Engineers

Area Plan Commission

City of South Bend

Ducks Unlimited

Elkhart County SWCD

Farm Service Agency

Ginger Valley Farms

IDNR - Division of Fish & Wildlife

IDNR - Division of Forestry

ISDA - Division of Soil Conservation

Quail Unlimited

Ivy Tech Community College

John Glenn High School FFA

John K uharic

Master Gardeners

Matthys Farm

National Wildlife Turkey Federation

Michiana Area Council of Government

Mishawaka Engineering Department

Mishawaka High School Waltonian League

Natural Resources Conservation Service

Pheasants Forever

Indiana University at South Bend

St. Joseph County

St. Joseph County Commissioners

St. Joseph County Council

St. Joseph County 4-H Fair Board

St. Joseph County Engineering Department

St. Joseph County Health Department

St. Joseph County Parks

St. Joseph County Surveyor/Drainage Board

Solid Waste Management District

South Bend Engineering Department

Town of Osceola

Town of Roseland

Urban Conservation Achievements

2007

Educating the public, land developers and contractors, and promoting best management practices on construction sites are keys to protecting storm water in St. Joseph County.

MS4 Education Display...



STORM WATER POLLUTION PREVENTION PLANS (SWPPP 's)

<i>MS4 Area:</i>	<i>Total Reviewed:</i>
Mishawaka	30
St. Joseph County	20
Notre Dame	9
South Bend	7
Other (Rule 5)	4
St. Mary's College	1
Indiana University	1
All MS4's:	72

Scour Stop & ECB's...



Straw Wattles...



Upper Left: The MS4 Education display was utilized at several public events in 2007. Here, it is shown at the Farmer's Market. Upper Right: Erosion control blankets and Scour Stop outlet protection stabilized this basin at the Toscana Park outdoor workshop. Lower Left: A straw wattle is used in combination with pea gravel bags as effective inlet protective device. Lower Right: Filter Soxx, silt fence, erosion control blankets and compost erosion control blankets were just a few of the measures on display at the Toscana Park outdoor workshop.

Filter Soxx, Silt Fence,



& compost ECB's...

St. Joseph County Grassroots' Legislation

On one of the hottest, most humid days Congressman Joe Donnelly joined the SWCD and local residents to discuss the Farm Bill.

The House of Representatives had just passed its version and Congressman Donnelly wanted to see some of the work that had been accomplished because of the previous farm bill. The tour began in a corn field to discuss irrigation management and ended up on a grass waterway, which looked nothing like the old pictures, thanks to the programs of the farm bill. This is just one of the many ways that the SWCD communicates with its legislators for better conservation.



Youth Educational Programs

Youth Educational Programs



500 school programs for over 29,000 students

St. Joseph County Public Library's Science Alive - over 5000 participants

Marian High School Canoe trip - 40 students

Christ the King family owl prowl - 165 participants

Corpus Christ family owl prowl - 70 participants

Walt Disney family owl prowl - 200 participants

Raggedy Ann Pre-school family night - 70 participants



St. Joseph County 4-H judging

St. Joseph County Public Library's summer programs - 5 presentations for over 150 participants

Cass County 5th grade field day 8 Wetland presentations for 638 students

Arrowhead RC&D River Rafting Captain

Cub Scout Day Camp

*Northwest Territory
Resource Conservation & Development*

Community Garden



2007 Garden Totals

Broccoli – 75 lbs.

Cucumbers – 50 lbs.

Green Peppers – 35 lbs.

Sweet Corn – 500 lbs.

Squash & Zucchini – 800 lbs.



Habitat Plantings

These plantings were made possible by using the District owned Warm Season Grass Drill.



2007 Plantings

Pasture/Hay Plantings – 121.4

Wildlife Plantings – 73.4

Total Acres Planted – 194.8



Wildlife Planting



Pasture Planting

2007

Affiliate Members

Bremen

Bellman Oil Company, Inc.
First Source Bank
Rader Equipment, Inc.
**Jerry Reed's Grain & Trucking &
Excavating**

Goshen

Kauffman & Sons, Inc.

Granger

Ronald & Janice Ivkovich

Lakeville

D & D Stoner Farms, Inc.
Dennis Schafer
Stoner Farms - Rick Stoner
Robin Vater
Charles & Violet Wolfram

LaPorte

LaPorte County Farm Bureau

Mishawaka

DeCloedt's Floral Place
Sitescapes, Inc.
Farm Bureau Ins., Andy Beutter
Charles Lehman
Weaver Electric & Heating Corp.

New Carlisle

Larry & Barbara Bromley
Red Hen Turf Farm, Inc.
Zahl's Elevator & Feed Mill

New Paris

The Farmer's Exchange

North Liberty

Bob's Country Store
Craft's Orchard
Custom Body Repair
George & Jane Dearing
McCormick Electrical Services, Inc.
R & K Excavating
Riddle Farms
Shoemaker Welding

Rochester

North Central Co-Op

South Bend

Cooreman Real Estate Group, Inc.
Edward Jones Investments - Tyler Glynn
Robert & Lois Ehninger
Enyart Electric
Farm Credit Services of Mid-America
Gunter & Erika Kison
Matthys Milling
Jeff Peterson
Pick of the Chick Egg Farm
Portage Realty Corporation
Ritschard Brothers, Inc.
St. Joseph County Farm Bureau, Inc.
St. Joseph County Farm Bureau Insurance
Shady Lane Farms
Steve & Sharon Wright

Walkerton

Hamilton Service Center
Kabelin Ace Hardware

Wyatt

DeSchepper Farm Supply, Inc.
Frick Services, Inc.
Wyatt Feed Supply, Inc.



The year at a glance...



Conservation Partnership Members Mission Statements



Natural Resources Conservation Service

To help people manage, conserve and enhance natural resources for present and future generations through education, public information, leadership, technical assistance and development of innovative programs.



St. Joseph County Soil and Water Conservation District

To provide guidance and education to the youth and adults of St. Joseph County and to administer programs to preserve, protect and improve soil, water, air, planet and animal resources for future generations.

*Indiana State Department of Agriculture
Division of Soil Conservation*



To facilitate the protection and enhancement of Indiana's land and water.

All Programs and Services of the Soil Conservation Service are offered on a nondiscriminatory basis without regard to race, color, national origin, religion, sex, age, marital status or handicap.